

NuPhotonics

Product Brief

Mini DFB Laser System



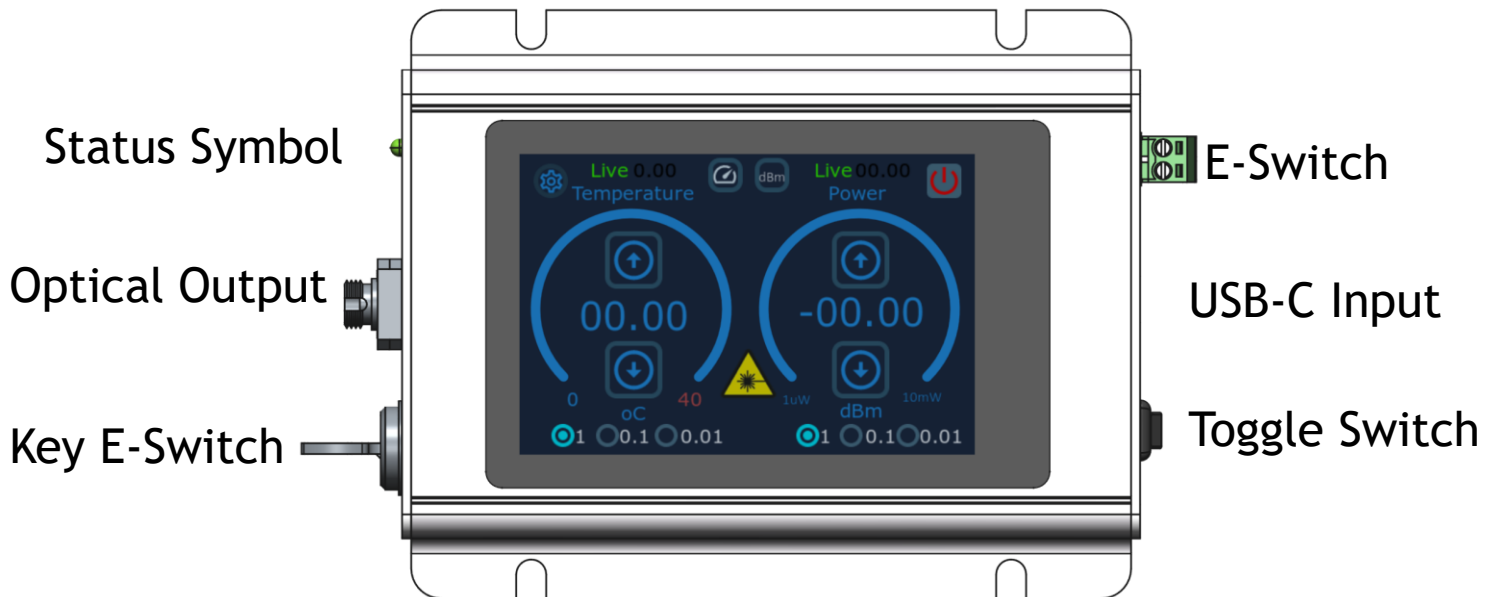
Final product dimensions and specifications are subject to change.

System Specifications



- ▶ Ruggedized Aluminum enclosure
 - ▶ Mechanical mounting screws
- ▶ Single USB-C Input
 - ▶ Power and Remote control
- ▶ Capacitive Touchscreen (Optional)
 - ▶ Toughened glass front panel
 - ▶ 3.5" 480x320 IPS Display
 - ▶ 170° viewing angle
- ▶ Panel Key E-switch (Optional)
- ▶ Full remote control
 - ▶ Dedicated NuPhotonics Software
 - ▶ Easily incorporate with existing LabVIEW and custom software
- ▶ User selectable wavelength up to 20 mW
 - ▶ 850, 1270, 1290, 1310, 1330, 1530, 1550, and 1570nm
 - ▶ ITU C-band

Highlights



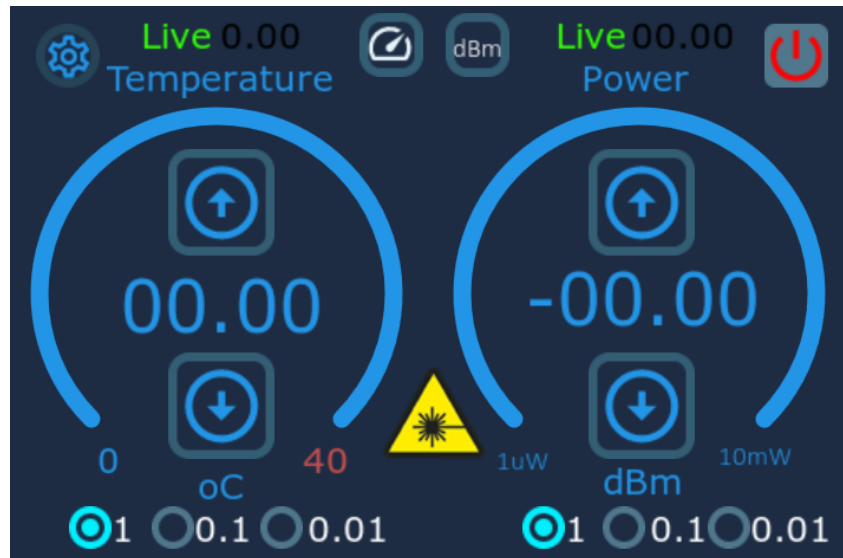
- ▶ Up to 20 mW optical Power
- ▶ 0°C to 40°C
 - ▶ Wavelength tuning of DFB Laser
 - ▶ Stabilization.
- ▶ Physical system power toggle switch
- ▶ Key E-switch lock out for safety
- ▶ Emergency shut off with E-Switch

Device Peripherals

- ▶ Optical connections can be customized to FC/APC,FC/PC,LC/APC, LC/PC
- ▶ Toggle switch
 - ▶ Solid Green LED indicates system is on
 - ▶ Flashing Red indicates system is Error
 - ▶ Solid Red indicates Laser Power On.
- ▶ Key E-Switch
 - ▶ User lock out.
 - ▶ Laser will not be enabled without key in the “On” Position.
- ▶ E-Switch
 - ▶ For embedded applications where if emergency button or door is opened system automatically shuts off.
- ▶ Capacitive Touch Screen
 - ▶ Full system control and live feedback
- ▶ USB-C Input
 - ▶ System power connector
 - ▶ Remote connection



Home Screen



- ▶ Temperature:

- ▶ Set TEC Temperature
- ▶ 3 Step sizes
- ▶ Live feedback

- ▶ Laser Power:

- ▶ Set Laser Power Level
- ▶ Able to switch value units
- ▶ Live feedback

- ▶ Laser “ON” Indicator

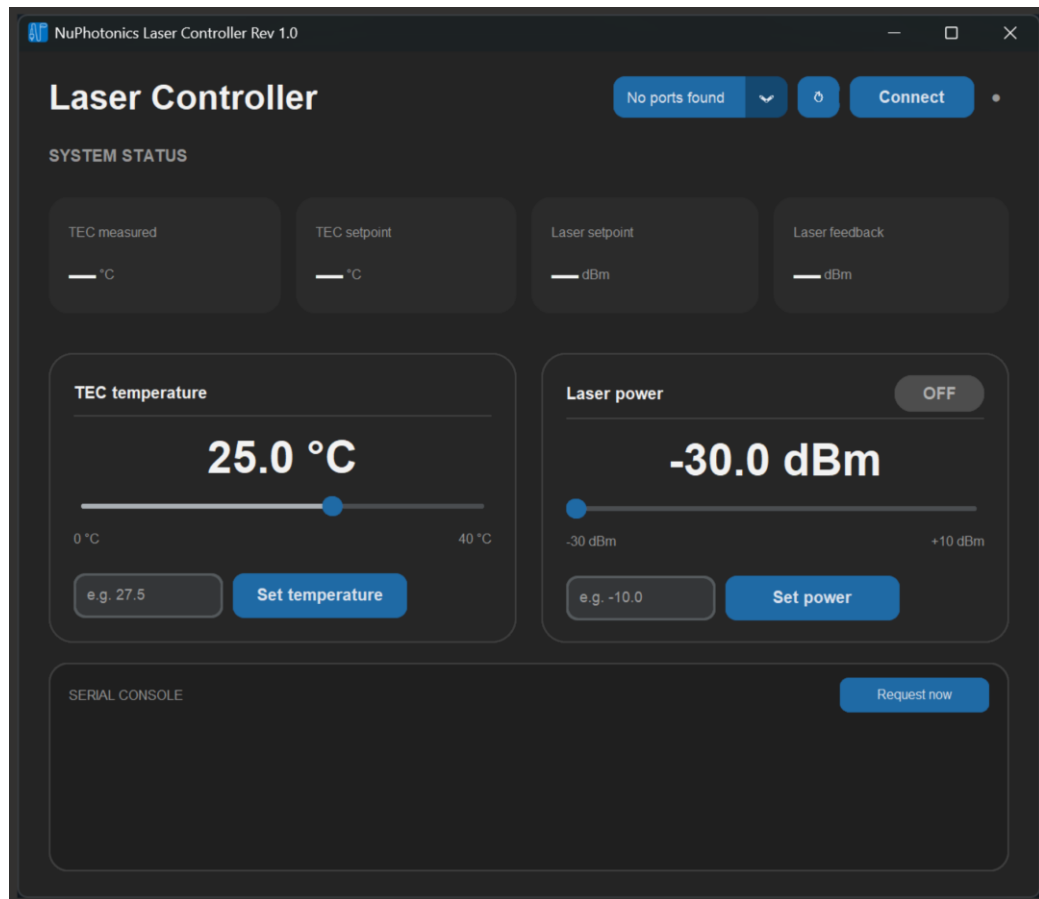


- ▶ Laser power button



- ▶ Values on home screen update with remote software control

NuPhotonics Laser Software



- ▶ Easy to use GUI for laser control.
- ▶ Automatically scan and find laser system.
- ▶ User can set laser power and laser temperature.
- ▶ Easily turn laser on and off.

Device Dimensions

