



10G DFB 1310 nm Laser TOSA Package

Description

A 10 Gb/s edge-emitting laser diode in a TO-can package. The multi-quantum well distributed feedback (DFB) laser is directly modulated (DML) with an RF signal. This device includes a built-in photodiode monitor to enable auto-bias operation. Various build configurations allow users to customize the optical connector as well as the mounting brackets. The optical sub-assembly includes an isolator.

Features

- TO-can package
- Single mode optical cable
- 1310 nm CW
- High SFDR
- Built-in InGaAs monitor photodiode
- Wide temperature operating range
- Built-in optical Isolator



Applications

- Test and Measurement
- Datacenters
- RF over Fiber (RFoF)



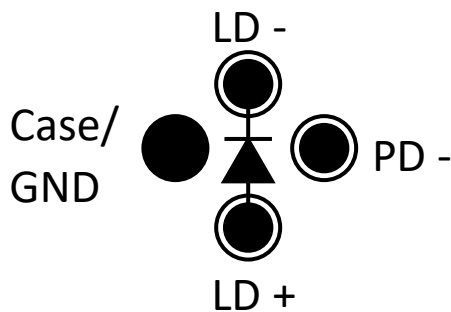
Electro-Optical Characteristics (T = 25°C)

Parameter	Symbol	Min.	Typ.	Max.	Unit	Test Conditions
Peak Wavelength	λ	1305	1310	1315	nm	T=25 °C
Threshold Current	I_{th}		5	15	mA	T=25 °C
Front Power	P_o		3		mW	$I_f = I_{th} + 20$ mA
Slope Efficiency	η	0.15			W/A	$I_f = I_{th} + 20$ mA
Series Resistance	R		8		Ohms	$P_o = 3$ mW
Forward Voltage	V_f		1.1	1.5	V	$I_f = I_{th} + 20$ mA
Spectral Wavelength Width (RMS)	$\Delta\lambda$		0.5		nm	$P_o = 5$ mW at -20 dB
Frequency Bandwidth	BW	8			GHz	Designed RF board.
Side Mode Suppression Ratio	SMSR	30			dB	
Monitor Current	I_m	0.4	0.5	1.0	mA	$I_{op} = 30$ mA
Optical Return Loss	ORL			-30	dB	CW = 1310 nm
Tracking Error	T_e	-1.5		1.5	dB	-40 – 80 °C
Rise/Fall Time	T_r/T_f		0.2		ns	20-80%, $I_f = I_{th}$
Optical Isolation	ISO	30			dB	
Relative Intensity Noise	RIN			-130	dB/Hz	

Absolute Maximum Rating (T = 25°C)

Parameter	Symbol	Condition	Min.	Max.	Unit
Reverse Voltage	V_r	Laser	-	2	V
		Photodiode	-	10	
Forward Current	I_F	-	-	100	mA
Reverse Current	I_R	Photodiode	-	2	mA
Fiber Bend Radius	R	SMF28	30	-	mm
Storage Temperature	T_{stg}	-	-25	90	°C
Storage Humidity	H_{stg}	-	-	85	% r.H.
Operating Temperature	T_{op}	-	-25	80	°C
Soldering Temperature	T_{st}	60 sec	-	200	°C
ESD Susceptibility		HBM	100	-	V

Device Pin Configuration (Bottom View)



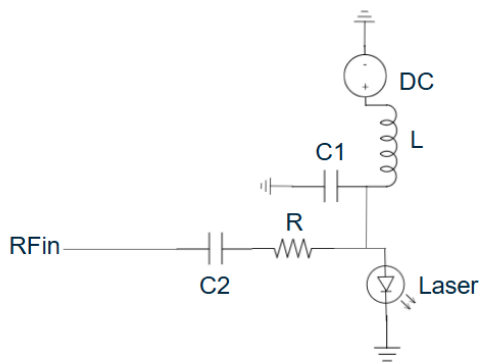
Build A: Standard Configuration

Pin Function:

- 1) Laser Anode
- 2) Photodiode Anode Tied to Case Ground
- 3) Laser Cathode
- 4) Monitor PD Cathode



Recommended RF Circuit (Dielectric material - Rogers RO3003® $\epsilon_r = 3.00$ Tan- $\delta = 0.001$)



Test Circuit Configuration

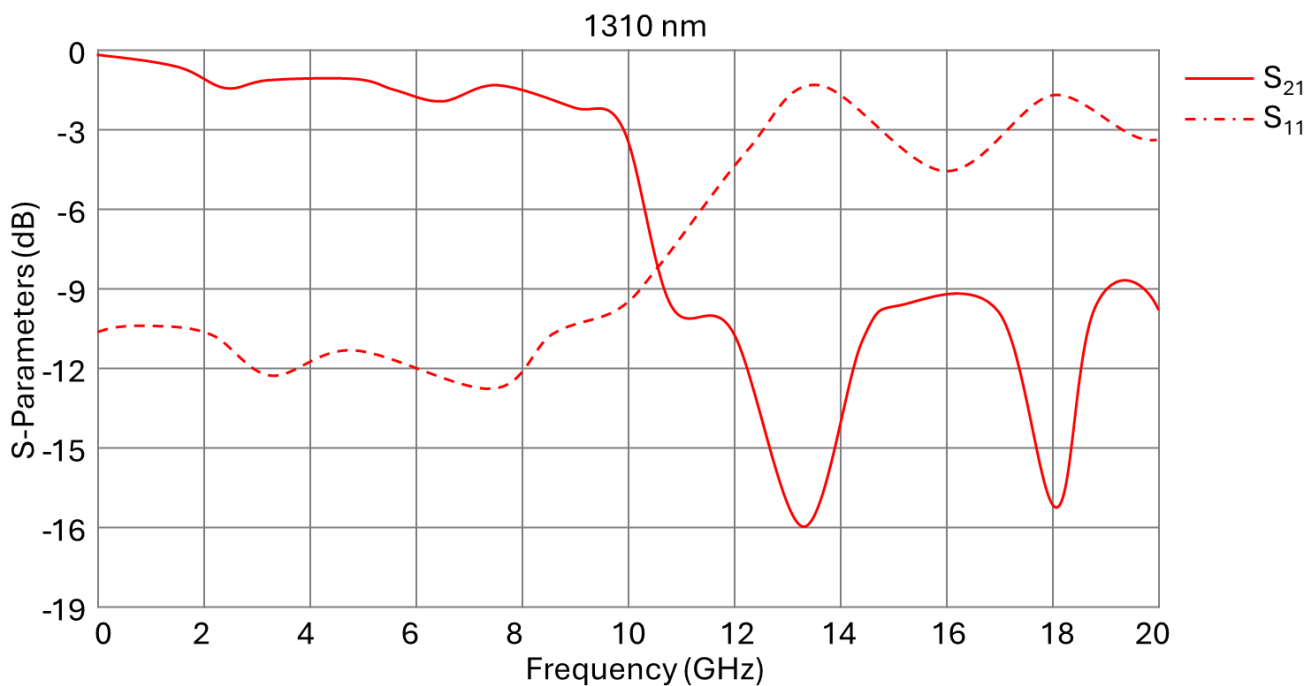
- L – 1.7 μ H Coil inductor (Rated 26 GHz)
- C1 – 47 nF 0201 RF Capacitor
- C2 – 2.2 μ F 0402 RF Capacitor
- R – 4 Ω 0402 RF Resistor

Microstrip traces - 50 Ω ground backed coplanar waveguide (GB-CPW)

Engineering Notes:

The DFB laser diode is an 8 Ω series device. Impedance matching can be challenging over wide bandwidths. To improve S11 impedance matching, a series SMD resistor (R) may be added to reduce S11 below -10 dB. Limiting R to less than 5 Ω helps minimize additional S21 losses. If a flatter S21 response is desired, capacitor C1 can be incorporated into the matching network. Optimizing the balance between R and C1 will result in improved S11 matching and a flatter S21 response.

Typical Performance Curves (Top = 25oC \pm 3oC, 401 Pts, 16 Avgs, 1.5% Smoothing)



Device Nomenclature

DL10-13-TO-X-XX-X

Product Line – 10G DFB Laser

Wavelength – 1310 nm

Device body style – TO-CAN

Device Mounting Support

- A) No Mount
- B) Horizontal Mount
- C) Vertical Mount
- D) Horizontal threaded

Pin Configuration

- A) Standard Pinout
- B) Custom Pinout

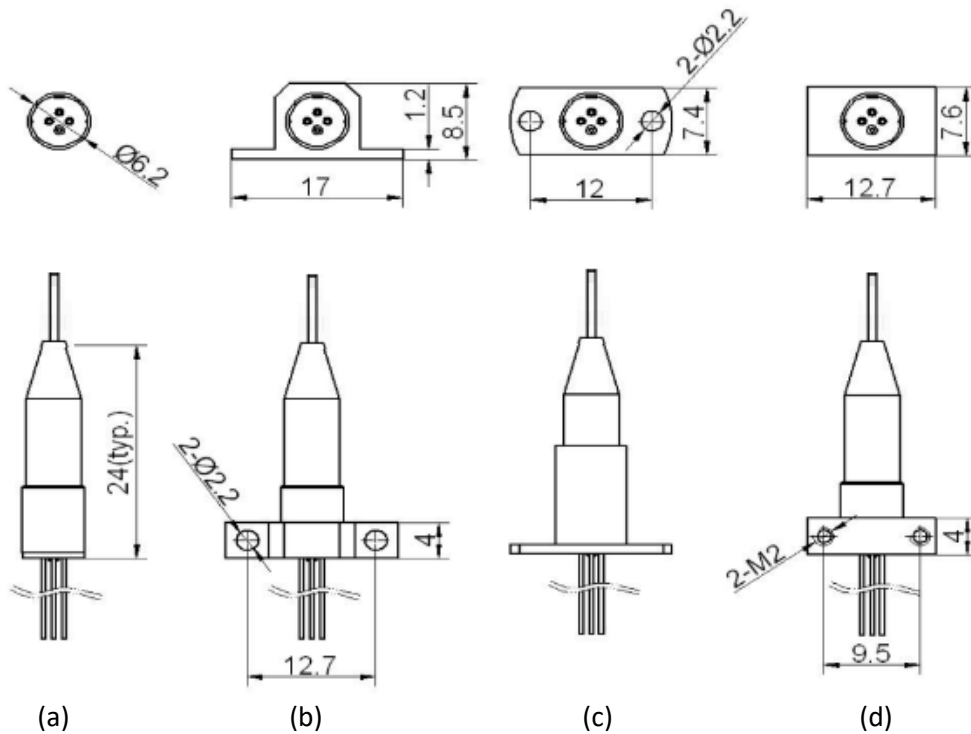
Optical Connector

- (00) No Connector
- (FA) FC/APC
- (FP) FC/PC
- (SA) SA/APC
- (SP) SC/PC

Example – DL10-13-TO-A-FA-A

10G DFB 1310 nm Laser TO-CAN No Mount FC/APC standard pinout

Build Configuration - Mounting



IMPORTANT NOTICES AND DISCLAIMERS

Information and Warranty Disclaimer

NuPhotonics provides technical and reliability information, including datasheets, design files, application notes, and other materials (collectively, “Resources”), to assist designers who are developing applications that incorporate NuPhotonics products. These Resources are provided “as is” and “with all faults.” NuPhotonics makes no warranties or representations, express or implied, regarding the Resources, including, without limitation, accuracy, completeness, reliability, or fitness for a particular purpose. NuPhotonics disclaims all implied warranties, including warranties of merchantability, fitness for a particular purpose, and non-infringement of third-party intellectual property rights.

Use of Resources

These Resources are intended for use only by skilled and qualified developers. The customer is solely responsible for selecting appropriate NuPhotonics products and for designing, validating, and testing their applications. The customer is further responsible for ensuring that their applications meet all applicable standards, safety requirements, and regulatory obligations.

Changes and Availability

NuPhotonics reserves the right to make corrections, modifications, enhancements, improvements, and other changes to its Resources and products at any time and without notice. NuPhotonics may discontinue any product or Resource without notice.

License and Restrictions

NuPhotonics grants a limited, non-exclusive, non-transferable license to use the Resources solely for the purpose of developing applications that incorporate NuPhotonics products. No other license, express or implied, is granted, including any license to third-party intellectual property. Reproduction, distribution, or display of the Resources, in whole or in part, without prior written permission from NuPhotonics is prohibited.

Limitation of Liability and Indemnification

In no event shall NuPhotonics be liable for any direct, indirect, incidental, special, consequential, or exemplary damages arising out of the use of the Resources. The customer agrees to defend, indemnify, and hold harmless NuPhotonics from and against any claims, damages, costs, losses, and liabilities arising from the customer’s use of the Resources or products.

Terms and Conditions

NuPhotonics objects to and rejects any additional or different terms proposed by the customer. For complete terms and conditions of sale, refer to the Legal section at www.nuphotonics.com.

Definitions: Product State

Alpha Build – Device is in internal engineering development and testing. Specifications are subject to significant change.

Beta Build – Device is available for external evaluation and engineering sampling. Specifications are subject to minor change.

Production Build – Device is released for production. Minor cosmetic or appearance variations may occur.

Obsolete – Device is no longer in production and is not supported.

Copyright © 2026, NuPhotonics LLC

Revision History

1.1 – March 2026 – Grammatical and spelling error correction. Updated Disclaimer section

1.0 – August 2024 – Initial Release